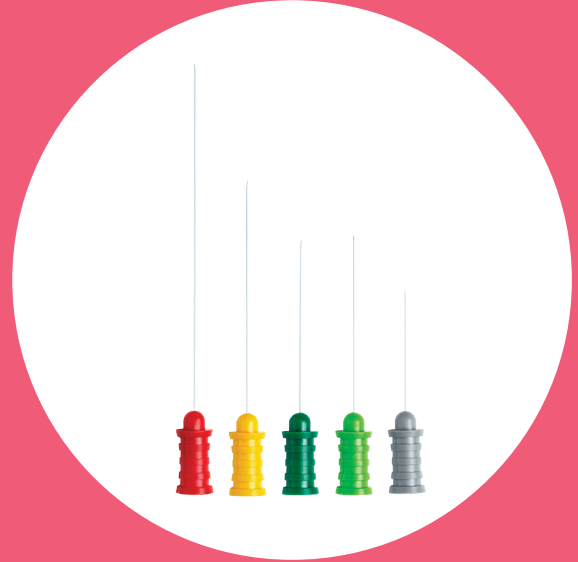


Ambu® Neuroline™ Monopolar

Neurology Needle Electrode - Single Use



KEY BENEFITS

The needle tip cut is designed to reduce the penetration force

Silicone coating reduces friction when inserting and moving the needle in the target area

Signal quality with stable impedance level

The needle features a precision grip hub that facilitates fine motor control

Color-coded hub to assist the identification of needle size

Available with or without a pre-attached lead wire

RECOMMENDED APPLICATION

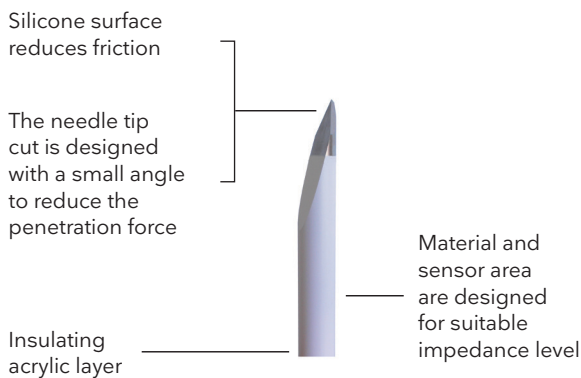
Electromyography (EMG)

DATASHEET

Ambu® Neuroline™ Monopolar features a needle tip designed to reduce the penetration force and has a silicone surface coating which reduces friction when inserting and working in the target area. The needles are made of stainless steel, designed to balance between stiffness and flexibility. Also, the needle material and sensor area are designed for a suitable and stable impedance level.

The needle features a color-coded hub, which is both ribbed and contoured so that it can be solidly held between the thumb and index finger and provides fine motor control.

Ambu Neuroline Monopolar needles are available both with and without a pre-attached lead wire. Ambu also offers an Ambu® Neuroline™ Monopolar cable with a length of 76 cm (30"). It provides an orientation-free connection to the needle electrode.



Ambu

SPECIFICATIONS

Environment

Electrode is not made with natural rubber latex
 Lead wire is not made with natural rubber latex
 Cable is not made with natural rubber latex
 Packaging is PVC-free

MATERIALS

Description	Electrode without lead wire	Electrode with lead wire
Needle	Stainless steel	Stainless steel
Coating	Silicone	Silicone
Insulating layer	Acrylic	Acrylic
Hub	Acrylonitrile Butadiene Styrene (ABS)	Acrylonitrile Butadiene Styrene (ABS)
Lead wire	N/A	Copper wire with PVC insulation
Connector	Stainless steel	Brass
Protection tube	Low-Density Polyethylene (LDPE)	Low-Density Polyethylene (LDPE)
Connection type	1.0 Pin - connector	1.5 mm touch-proof (DIN 42 802)
Sterilization method	EO-sterilized	EO-sterilized

Packaging

Pouches, transparent layer	Polyethylene terephthalate (PET)
Pouches, centre layer	Polypropylene (PP)
Pouches, paper layer	Paper
Boxes	Cardboard

AVAILABLE CONFIGURATIONS

Item no.	Length		Diameter		Shelf life in months		Packaging	
	mm	inch	mm	Gauge	(unopened pouches)	Units/pouch	Units/inner box	Units/outer box
● 74225-36/40	25	1	0.35	29G	36	1	40	320
● 74238-36/40	38	1.5	0.35	29G	36	1	40	320
● 74238-45/40	38	1.5	0.45	26G	36	1	40	320
● 74250-45/40	50	2	0.45	26G	36	1	40	320
● 74275-50/40	75	3	0.50	25G	36	1	40	320
● 74325-36/40*	25	1	0.35	29G	36	1	40	320
● 74338-36/40*	38	1.5	0.35	29G	36	1	40	320
● 74338-45/40*	38	1.5	0.45	26G	36	1	40	320
● 74350-45/40*	50	2	0.45	26G	36	1	40	320
● 74375-50/40*	75	3	0.50	25G	36	1	40	320

*Pre-attached lead wire: 76 cm (30")

74225-36/40 ● Product ● Needle length ● Needle diameter ● Units per inner box

AMBU® NEUROLINE™ MONOPOLAR CABLE

Item no.	Cable length		Shelf life in months	Needle socket mm	Connector mm	Units/pouch	Packaging	
	cm	inch					Units/inner box	Units/outer box
○ 1744	76	30"	60	1.0	1.5 (DIN 42 802)	1	N/A	N/A

The reusable Ambu® Neuroline™ Monopolar cable has an orientation-free connection to the needle electrode, and fits EMG equipment featuring a DIN 42802 connector. The cable is shielded, flexible, and can be reused up to 500 times.

Ambu

Distributed by:

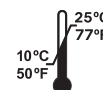
Ambu Limited

Incubator 2
 Alconbury Weald Enterprise Campus
 Alconbury Weald
 Cambridgeshire
 PE28 4XA

T 01480 498403
 ambu.co.uk



K = 1.5 mm connector



Storage temperature



Ambu® Neuroline™ Monopolar cable



2797

US: Rx only